

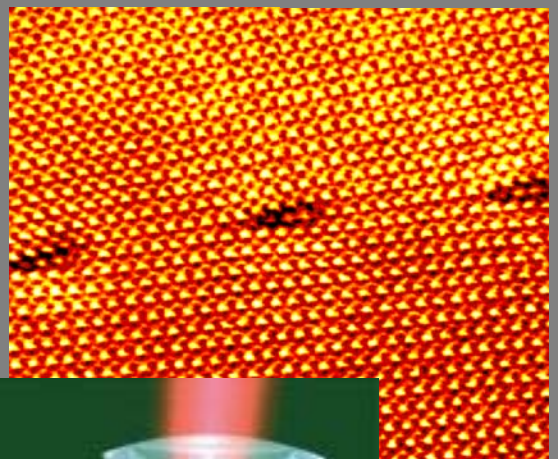
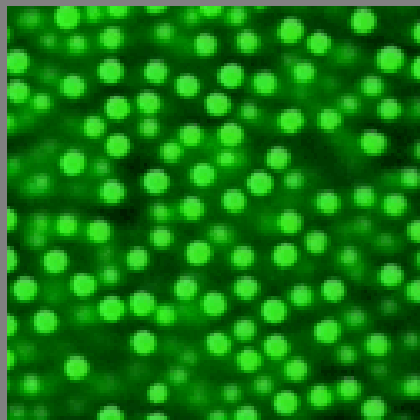
Journal of Undergraduate Research

A Refereed Journal for Undergraduate Research in the Pure & Applied Sciences,
Mathematics, and Engineering

August 2007

Volume 1

Number 1



Journal of Undergraduate Research

The Mission of the Journal of Undergraduate Research is to publish outstanding scholarship of undergraduates in the areas of pure & applied sciences, mathematics, and engineering at the University of Illinois at Chicago and showcase the work of the University Scholars.

To submit your manuscript, email your file(s) to: rfklic@uic.edu. For an initial submission you must submit:

- a PDF file of the complete paper
- OR a Word file containing the complete paper
- OR a Word file containing the text, references, tables and figure captions plus an individual file of each figure, prepared to the specification laid out below.

Supplementary information such as datasets, animations, models or videos must be submitted separately.

When submitting a revised article you must submit:

- a text file containing the revised text, references, tables and figure captions, prepared to the specification described below. This file must not include graphics.

The preferred file format is Word (.doc) or rich text format (.rtf), but Word-compatible word processor files (e.g. .wpd) and LaTeX2e files will also usually be acceptable

- a separate image file of each figure. Ensure that figures will be legible and comprehensible at final size and are of sufficiently high resolution (see guidelines below).

Permitted file formats are TIFF (.tif), JPEG (.jpg) and EPS (.eps).

- a response to the referees' comments, as a Word or PDF file.

FORMATTING & STYLE GUIDELINES

Formatting of manuscript

In preparing the manuscript as a Word or rtf file, there is no need to format the article to a specific template, but please include italic or bold type where necessary.

Use hard returns at the end of paragraphs only; switch autohyphenation off; and do not justify text.

Tables should be included within the manuscript file, not provided as separate files. Use Word Table mode, not tabs or spaces between columns. Do not provide tables as image files.

Equations should be produced using Word Equation Editor.

Structure of submission

The submitted manuscript must contain:

- a title page giving full contact details for all authors. Pages should be numbered consecutively with the title page as page 1
- an abstract of no more than 150 words, giving a concise summary of the aims, content, and conclusions
- up to six keywords to be used for indexing purposes
- list of symbols (if appropriate)
- text: section and subsection headings should be clearly differentiated, using a structured numbering system if necessary (note that this numbering is to guide typesetting and will not appear in the printed version)

- appendices (if any)
- acknowledgements (if any)
- references (see below)
- a list of figure captions. Each figure should have a caption that is intelligible without reference to the text; discussion of figures should appear in the text of the paper, not the caption. Where appropriate, scales or magnifications must be provided
- tables.

STYLE GUIDELINES

Use of SI units is mandatory. Journal style is to use the form Sm^{-1} , Am^{-2} , $\text{Wm}^{-1}\text{K}^{-1}$, not S/m, A/m², W/m.K

The full form of any abbreviation or acronym should be given in the text when the term is first used. Do not use full points within abbreviations (e.g. SEM, XPS).

Be careful not to use the same symbol to represent more than one variable. Ensure that Greek symbols are clear and that similar characters, e.g. the letter 'el' and the number 'one' and the letter 'oh' and the number 'zero', are clearly distinguished and used consistently. A list of symbols should be provided if helpful to the reader.

Figures should be cited in a single sequence throughout the text as 'Fig.1', 'Fig.2', ...

Equations and tables should also be numbered in sequence and referred to in the text as, for example, 'equation (1)' and 'Table 1' respectively.

REFERENCES

Reference and notes should be numbered serially in a single sequence. Citations in the text should be as superior characters, thus,^{1,2,4-6} outside any punctuation marks. References cited

for the first time in a table or figure caption should be numbered as if they appeared in the text where the table or figure is first mentioned. References should be set out in a complete list at the end of the paper, numbered according to their appearance in the text, not positioned as footnotes.

All references given must be complete, including all authors where known, and should be verified at source.

Journal abbreviations in references follow the ISO system, e.g.

R. Sinclair, M. Preuss and P. J. Withers: Mater. Sci. Technol., 2005, 21, 27-34.

J.-W. Park, J. M. Vitek, S. S. Babu and S. A. David: Sci. Technol. Weld. Joining, 2004, 9, 472-482.

M. M. Stack: Int. Mater. Rev., 2005, 50, 1-18.

If the abbreviation is not known, the journal title should be given in full. Where the pagination is not consecutive through the volume, it is essential to give the month or part number.

Book references should give full bibliographic details, e.g.

H. K. D. H. Bhadeshia: 'Bainite in steels', 2nd edn, 240; 2001, London, IoM Communications.

J. V. Wood: in 'Future developments of metals and ceramics', (ed. J. A. Charles et al.), Vol.1, 235-239; 1992, London, The Institute of Materials.

Standard texts should not be cited in their entirety: indicate the appropriate page or section.

Conference references must include the date, location, and organizer or publisher of the meeting, e.g.

M. H. Loretto: Proc. 2nd Int. Conf. on 'Research and development in net shape manufacturing',

Birmingham, UK, March 1999, University of Birmingham, Paper 23.

Reports, theses, etc. should be presented in the form:

R. D. Niel: 'Interfacial structures in intermetallic/steel joints after high temperature service', Report 1131, AVS plc, Huntingdon, UK, 2000.

D. Sha: 'Characterisation of melt integrity in injection micromoulding', PhD thesis, Imperial College, London, UK, 2002.

ILLUSTRATIONS

Once the submission is accepted for publication, the authors must provide high resolution digital files of all figures to the specification laid out below.

Figure size and legibility

Check that all labels are correct and free of spelling or numerical errors.

In general, figures will be reproduced to single column width (80mm) or page width (168mm).

Authors must ensure that the labeling on figures will be legible when reduced to final size. Lettering should be approximately 8pt in size (equivalent to 2mm in height for capital letters) at final width (i.e. figures that are wider before reproduction generally require larger type sizes). Keys must be legible when the figure is reduced to final size.

Ensure that curves on multiple plots are clear, in particular that any symbols used on graphs can be distinguished following reduction. Labeling of individual curves may be preferable to keys in these circumstances.

Axis labels should be of the form:

Stress, MPa
Velocity (v), m s^{-1}
 $\log(l, \text{nm})$

Image file formats and resolution

Each figure must be supplied in digital form as a separate, clearly named file.

Acceptable file formats are TIFF, JPEG and EPS. If supplying EPS files ensure that all fonts are attached. Figures embedded in Word documents are not suitable.

Images should be saved at a resolution of at least 600 dpi at final size (dpi=dots or pixels per inch; 600dpi=240 dots per centimeter). Do not save at the default resolution (72dpi).

Crop any unwanted white space from around the figure before sizing.

Halftones (photographs) should be supplied as greyscale images.

Line drawings or diagrams should be scanned as line art or produced to the appropriate resolution using a standard package such as PhotoShop.

Diagrams with shaded or toned areas or line/toned figures should be submitted as greyscale images.

Color figures for printing should be provided in CMYK format.

Color figures for online use only should be provided in RGB format. In some instances a reduced resolution of 72dpi at final size may be acceptable for these figures.

SUPPLEMENTARY MATERIAL

Supplementary material such as videos, animations, models or datasets will be accessed via a hyperlink from the online version of the paper. There is no requirement to use specified file or software formats but be aware of the need to use commonly available platforms and to minimize file size for ease of downloading.